



TILT, RECLINE, AND SEAT HEIGHT ADJUSTMENT-
REHAB SHOWER/COMMODE CHAIR

- Complete Packages for Easier Ordering Available
- Stainless Steel Frame
- Tilt, Recline and Seat Height Adjustment
- Several Seat Options Available
- 350 lb. (158kg) Weight Capacity
- Seven Seat and Frame Sizes: 16"Wx18"D, 18"Wx18"D, 18"Wx20"D, 20"Wx18"D, 20"Wx20"D, 22"Wx18"D and 22"Wx20"D

This tilt-in-space shower/commode chair with stainless steel frame comes with an optional reclining back and tool-free, 4-way seat. The combination of tilt-in-space and recline easily accommodates complex positioning needs.

Multiple features combine to provide support, comfort, and pressure relief, along with the other benefits of tilt-in-space technology. The chair height adjustment allows for over toilet use or can be used with a commode pan, making this chair a versatile answer for home or institutional use.

FRAMES



P13762
16"Wx18"D
Stainless Steel
Frame



P13763
18"Wx18"D
Stainless Steel
Frame



P13764
18"Wx20"D
Stainless Steel
Frame



P13765
20"Wx18"D
Stainless Steel
Frame



P13766
20"Wx20"D
Stainless Steel
Frame



P13767
22"Wx18"D
Stainless Steel
Frame



P13768
22"Wx20"D
Stainless Steel
Frame

FRAME POSITIONING



P13759
Tilt



P13760
Recline



P13761
Tilt/Recline

CASTERS



P60800-4
5" Dual Locking
Casters
(2 pair)



P13770
5" Casters (pair) and
5" Dual Locking
Casters (pair)

SEATS

*Seat works in all 4 positions



P61124
16"Wx18"D
Ensolite® 1" foam
Front Open Seat
A-4.75"xB-7.75" opening



P60993*
18"Wx18"D
Comfortuff 1.5" waterfall foam
Front/Rear Open Seat
A-5"xB-8" opening



P60974
18"Wx18"D
Comfortuff sloped foam
Front Open Seat
A-4"xB-6.5" opening



P61058
18"Wx18"D
Ensolite® 2" waterfall foam
Front Open Contoured Seat
A-5.5"xB-8.25" opening



P61086
18"Wx18"D
Ensolite® 2" foam
Solid Seat



P61122
18"Wx20"D
Ensolite® 1" foam
Solid Seat



P61121
18"Wx20"D
Ensolite® 1" foam
Front/Rear Open Seat
A-4.5"xB-7.5" opening



PP61038
18"Wx20"D
Comfortuff
1.5" waterfall foam
Side Open Seat
A-5"xB-8" opening



P61038
20"Wx18"D
Comfortuff
1.5" waterfall foam
Front Open Seat
A-5"xB-8" opening



P60913*
18"Wx18"D
Ensolite® 2" waterfall foam
Front/Rear Open Seat
A-5.25"xB-8" opening



P60903
18"Wx20"D
Ensolite® 1" foam
Front/Rear Open Seat
A-4.5"xB-7.75" opening



PP61121
20"Wx18"D
Ensolite® 1" foam
Side Open Seat
A-4.5"xB-7.5" opening



PP61122
20"Wx18"D
Ensolite® 1" foam
Solid Seat



P61123*
20"Wx20"D
Ensolite® 1" waterfall foam
Front/Rear Open Seat
A-5"xB-8" opening



P60905
22"Wx18"D
Ensolite® 1" foam
Front/Rear Open Seat
A-4.5"xB-7.75" opening



P61126
22"Wx22"D
Ensolite® 1" waterfall foam
Front/Rear Open Seat
A-5"xB-8" opening

ARMRESTS



P13729
18"D Left Hand
Armrest with Pad



P13730
18"D Right Hand
Armrest with Pad



P13731
18"D Left Hand
Armrest with
Arm Trough



P13732
18"D Right Hand
Armrest with
Arm Trough



P13735
20"D Left Hand
Armrest with Pad



P13736
20"D Right Hand
Armrest with Pad



P13737
20"D Left Hand
Armrest with
Arm Trough

LEG RESTS



P13738
20"D Right Hand
Armrest with
Arm Trough



P13615
Left Hand
Height-Adjustable
Arms



P13616
Right Hand
Height-Adjustable
Arms



PL13725
Left Leg Rest



PR13725
Right Leg Rest



P13571
Left Elevating
Leg Rest



P13572
Right Elevating
Leg Rest

FOOT PLATES



PL11099
Left Foot Plate



PR11099
Right Foot Plate



PL11100
Left Foot Plate with Heel Loop



PR11100
Right Foot Plate with Heel Loop



P13891
Left Oversized Aluminum Foot Plate



P13892
Right Oversized Aluminum Foot Plate



PL11101
Left Padded Foot Plate

BACKS



PR11101
Right Padded Foot Plate



P13745
16"W Sling Back



P13746
16"W Solid Back



P13747
18"W Sling Back



P13748
18"W Solid Back



P13750
20"W Sling Back



P13751
20"W Solid Back

BELTS



P13752
22"W Sling Back



P13753
22"W Solid Back



PW60884
Waist Belt
(62", 64", 66", or 68" circumference with 12" overlap)



PT60884
Trunk Belt
(62", 64", 66", or 68" circumference with 12" overlap)



P60879
Calf Strap



P11093
Bodypoint®
Trunk Belt



P11102
Bodypoint®
Trunk Belt (pair)

POSITIONING AIDS



P11116
Bodypoint® Trunk Belt & Waist Belt



P11112
Bodypoint® XL Trunk Belt



P11113
Bodypoint® Belt w/Quick Release Knobs



P61081
Bodypoint® Calf Strap



P11114
Bodypoint® Knee Belt



PL13574
Left Hand Swing-Away Adjustable Lateral



PR13574
Right Hand Swing-Away Adjustable Lateral

PANS



PL13618
Left Hand Arm-Mounted Hip Guide



PR13618
Right Hand Arm-Mounted Hip Guide



P61006
Abductor/Deflector Small



P13833
16"Wx18"D Pan/Hanger



P13834
18"Wx18"D Pan/Hanger



P13835
18"Wx20"D Pan/Hanger



P13836
20"Wx18"D Pan/Hanger

HEAD SUPPORTS



P13837
20"Wx20"D Pan/Hanger



P13838
22"Wx18"D Pan/Hanger



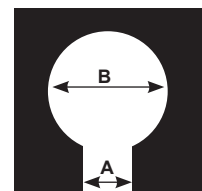
P13839
22"Wx20"D Pan/Hanger



P13621
Head Support Large



P13758
Head Support XL



Seat Opening Measurements



285TR in Tilt and Recline



285TR in Tilt

full option details at
activeaid.com

SPECIFICATIONS

| | 16"Wx18"D Frame | 18"Wx18"D Frame | 18"Wx20"D Frame | 20"Wx18"D Frame | 20"Wx20"D Frame | 22"Wx18"D Frame | 22"Wx20"D Frame |
|---|--------------------|--------------------|-----------------------|--------------------|------------------------|------------------------------|--------------------|
| Weight Capacity | (158kg) 350 lbs. | 350 lbs. | 350 lbs. | 350 lbs. | 350 lbs. | 350 lbs. | 350 lbs. |
| Seat Width | 16" (40cm) | 18" (45cm) | 18" (45cm) | 20" (50cm) | 20" (50cm) | 22" (55cm) | 22" (55cm) |
| Width between Arm Rests | | | | | | | |
| Armrest with Pad | 20" (50cm) | 22" (55cm) | 22" (55cm) | 24" (60cm) | 24" (60cm) | 26" (66cm) | 26" (66cm) |
| Armrest with Arm Troughs | 18" (45cm) | 20" (50cm) | 20" (50cm) | 22" (55cm) | 22" (55cm) | 24" (60cm) | 24" (60cm) |
| Height Adjustable Armrests | 19.5" (49cm) | 21.5" (54cm) | 21.5" (54cm) | 23.5" (59cm) | 23.5" (59cm) | 25.5" (64cm) | 25.5" (64cm) |
| Seat Depth | 18" (45cm) | 18" (45cm) | 20" (50cm) | 18" (45cm) | 20" (50cm) | 18" (45cm) | 20" (50cm) |
| Seat Height Range From Floor to Top of Seat (transfer height) | 22"-25" (55-63cm) | | | | | | |
| Leg Rest Range | | | | | | <u>with Padded Footplate</u> | |
| Leg Rest | | | 16"-20" (40-50cm) | | | 14.75"-18.75" (37-47cm) | |
| Elevating - Up | | | 16.5"-23.5" (41-59cm) | | | 15.25"-22.25" (38-56cm) | |
| Elevating - Down | | | 15.5"-22.5" (39-57cm) | | | 14.25"-21.25" (36-53cm) | |
| Usable Seat Depth w/Solid Back | 16" (40cm) | 16" (40cm) | 18" (45cm) | 16" (40cm) | 18" (45cm) | 16" (40cm) | 18" (45cm) |
| Arm Height from Top of Seat | | | | | | | |
| Armrest with Pad | | | | | 8" (20cm) | | |
| Armrest with Arm Troughs | | | | | 8.5" (21cm) | | |
| Height Adjustable Armrests | | | | | 4"-14" (10-35cm) | | |
| Back Height From Top of Seat | | | | | 22" (55cm) | | |
| Gap between top of seat and bottom of back | | | | | 4" (10cm) | | |
| Maximum Back Slack | | | | | 3" (7cm) | | |
| Seat to Back Angle (or Range) (Recline) | | | | | 0-40° | | |
| Tilt Range | | | | | 0-26° | | |
| Head Support Height Range - top of Seat to bottom of Cervical Support | | | | | 22.5"-30.5" (39-77cm) | | |
| Under Seat Height Clearance | | | | | 17.75" (45cm) | | |
| Under Seat Width Clearance | 14" (35cm) | 16" (40cm) | 16" (40cm) | 18" (45cm) | 18" (45cm) | 20" (50cm) | 20" (50cm) |
| Overall Width | | | | | | | |
| min. Armrest with Arm Troughs | 24" (60cm) | 26" (66cm) | 26" (66cm) | 28" (71cm) | 28" (71cm) | 30" (76cm) | 30" (76cm) |
| max. Height Adjustable Armrests | 29" (73cm) | 31" (78cm) | 31" (78cm) | 33" (83cm) | 33" (83cm) | 35" (88cm) | 35" (88cm) |
| Overall Length | | | | | | | |
| Min. | | | | | 42" (106cm) | | |
| Max. | | | | | 66" (167cm) | | |
| Back of Unit to Start of Commode Opening | | | | | 15" (38cm) | | |
| Turning Diameter | | | | | 53" (134cm) | | |
| Seat Used to Generate Specifications | | | | | #60993 18"Wx18"Dx2.5"H | | |