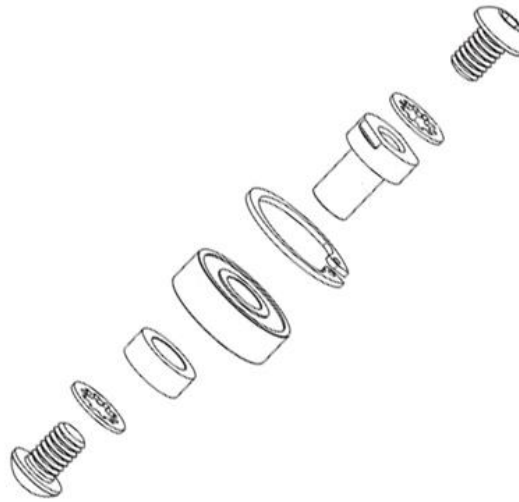




## SMC Xtreme Service Kit Hardware | Pulleys



To maintain peak performance the bearing assemblies on the Shuttle Xtreme can be replaced by the user in just 4 steps with the new Cable Xtreme Service Kit or Rebuild Pack. The Xtreme Service Kit (Part# SM156309) comes with all the necessary parts and tools needed to rebuild a single unit. The Xtreme Rebuild Pack (Part# SM156308) comes with all the parts needed to rebuild up to 10 pulleys (tools not included).

---

### Key Features

- |                        |                        |                     |
|------------------------|------------------------|---------------------|
| • QTY 2 – Axle         | • QTY 2 – Axle Spacer  | • QTY 2 – Snap Ring |
| • QTY 2 – Ball Bearing | • Snap Ring Pliers     | • Assemblies        |
| • QTY 4 – Lock Washer  | • QTY 4 – Button Screw | • Tools: Hex Wrench |
| • Xtreme Wrench        |                        |                     |
- 

### Additional Information

**Shipping weight** | 0.24 lbs

**Compliant** | BERRY COMPLIANT

### Product Code

SM156309

