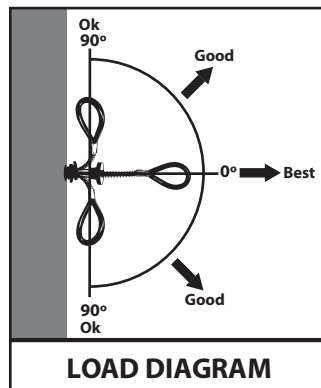


PERFORMANCE:
Static Tensile Strength: 5000-lbf (22kN)
Maximum Capacity: One worker with max weight of 310-lbs when used as a single point anchorage connector for personal fall arrest or restraint system

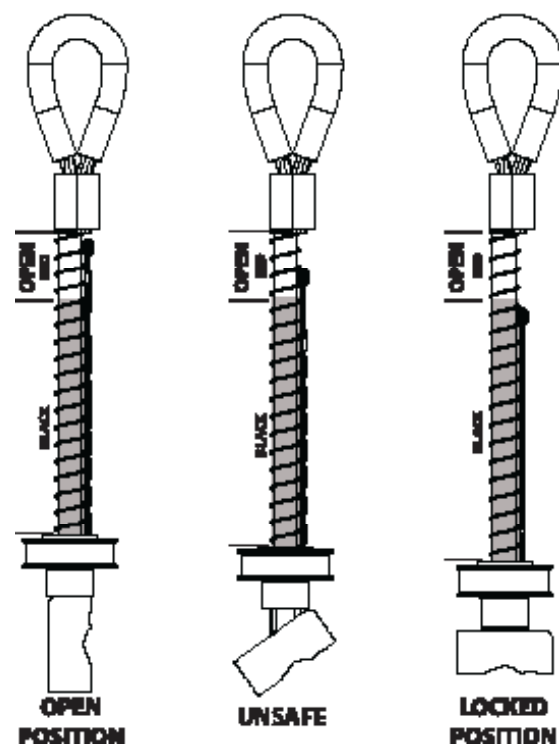
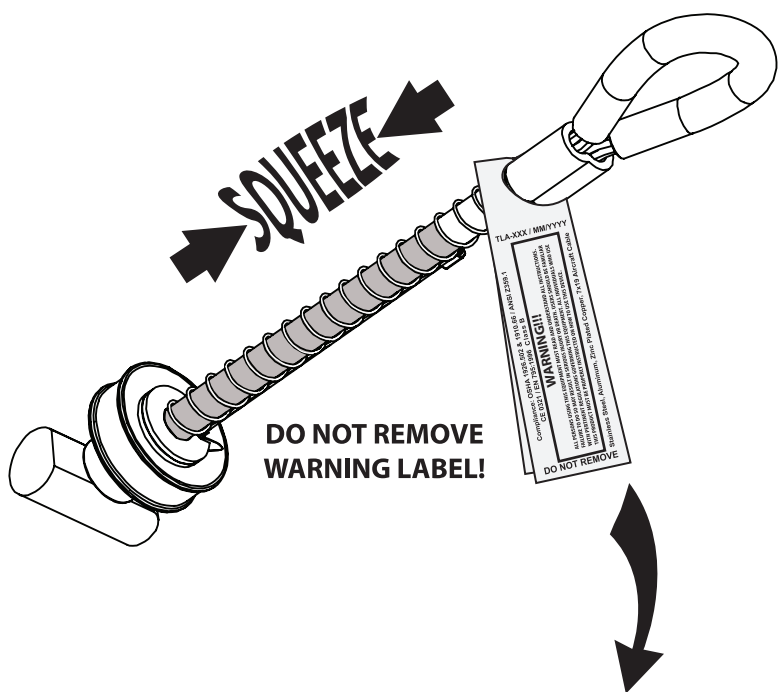
DIMENSIONS:
Weight: .45-lbs (207g)
Length: 13.75" (349mm)
Diameter: .75" (19mm)

REGULATORY COMPLIANCE:
 ANSI Z359.1-2007, ANSI Z359.7-2011
 OSHA 1926.502, OSHA 1910.66,
 EN 795:1996 Class B

COMPONENT MATERIALS:
Aluminum: Hole Plug, Trigger
Aircraft Cable: Main Cable, Activator Wire
Polyurethane: Loop Cover
Stainless Steel: Toggle Bar
Zinc Plated Steel: Spring
Zinc Plated Copper: Swage

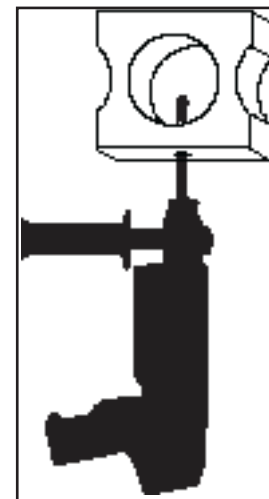


TOGGLE POSITION DIAGRAM



The indicator may be used as a means of determining toggle position when view of toggle bar is obstructed by the anchorage. If indicator is aligned with the red zone, toggle bar is in open or unsafe position. If top of indicator is below the red zone, toggle bar is in locked position.

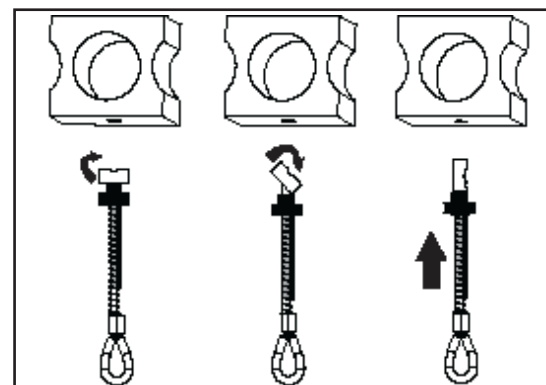
INSTALLATION INSTRUCTIONS:



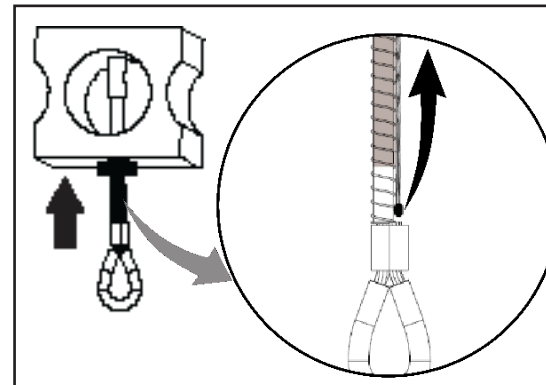
1. FOR HOLLOW CORE CONCRETE:
 Drill a .75" (20mm) hole in center of the hollow channel in the hollow core concrete. The hollow core concrete must be at least 5,000-psi (34.5 MPa) concrete with a web thickness of 1.75" (44.45mm) thick max 3". Works with 6" hollow core or larger. Never drill any hole closer than 6" (152mm) to any edge or corner.

FOR STEEL:
 Drill a .75" (20mm) hole in the steel flange. Steel flange must be at least .25" (6.4mm) thick max 3". Never drill a hole closer than 1.5" (38mm) to any edge or corner.

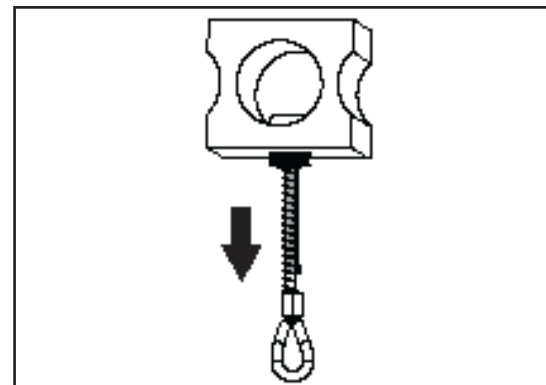
Always inspect the hole carefully when reusing a previously drilled hole.



2. Rotate toggle bar into open position and insert into hole.



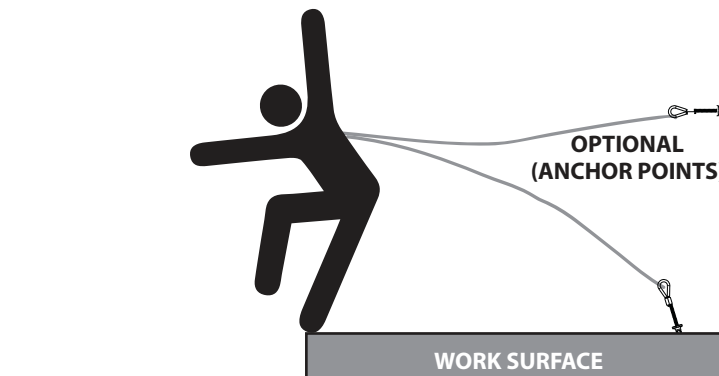
3. Push anchorage connector into drilled hole and engage toggle bar by pushing activator wire towards hole plug.



4. Pull on anchor loop and ensure toggle bar is fully seated in locked position as seen in the **TOGGLE POSITION DIAGRAM**. The hole plug should be fully seated in drilled hole.

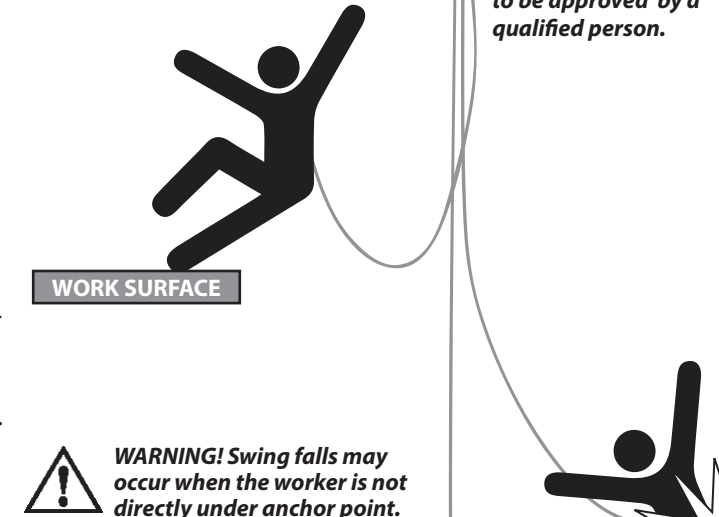
WARNING! Location of installation of the toggle anchor must be approved by an engineer or other qualified person to be compatible with any and all structural & operational characteristics of the selected installation location.

May be used as an anchor point for a leading edge restraint system. See optional anchor points below for example. The use of two anchors is not required for leading edge restraint systems unless otherwise specified by the manufacturer.



The user shall be equipped with a means of limiting the maximum dynamic forces exerted on the user during the arrest of a fall to a maximum of 8 kN (1800-lbf).

Concrete must be 3000-psi or higher and fully cured. Installation location to be approved by a qualified person.



WARNING! Swing falls may occur when the worker is not directly under anchor point.

MINIMUM CLEARANCE 3ft (1m)
 DECK/FLOOR/GROUND LEVEL

WARNING! All products subjected to fall arresting forces should be removed from service immediately!

Compliance: OSHA 1926.502, OSHA 1910.66, ANSI Z359.1(07), ANSI Z359.7(11), EN 795:1996 Class B
WARNING!!
 ALL PERSONS USING THIS EQUIPMENT MUST READ AND UNDERSTAND ALL INSTRUCTIONS. FAILURE TO DO SO MAY RESULT IN SERIOUS INJURY OR DEATH. USERS SHOULD BE FAMILIAR WITH PERTINENT REGULATIONS GOVERNING THIS EQUIPMENT. ALL INDIVIDUALS WHO USE THIS PRODUCT MUST BE PROPERLY INSTRUCTED ON HOW TO USE THIS DEVICE.
 Stainless Steel, Aluminum, Zinc Plated Copper, 7x19 Aircraft Cable
 Main Capacity 310 lbs
 P.M.I. INDUSTRIES
 Toggle Bolt Anchor
 Model: HD08225
 XXX-XXX-7MM YYYT
 3/4"
 INSPECT BEFORE USE
 1-706-764-1437